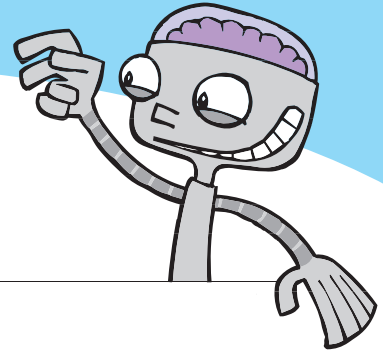


# ELEPHANT FOOT



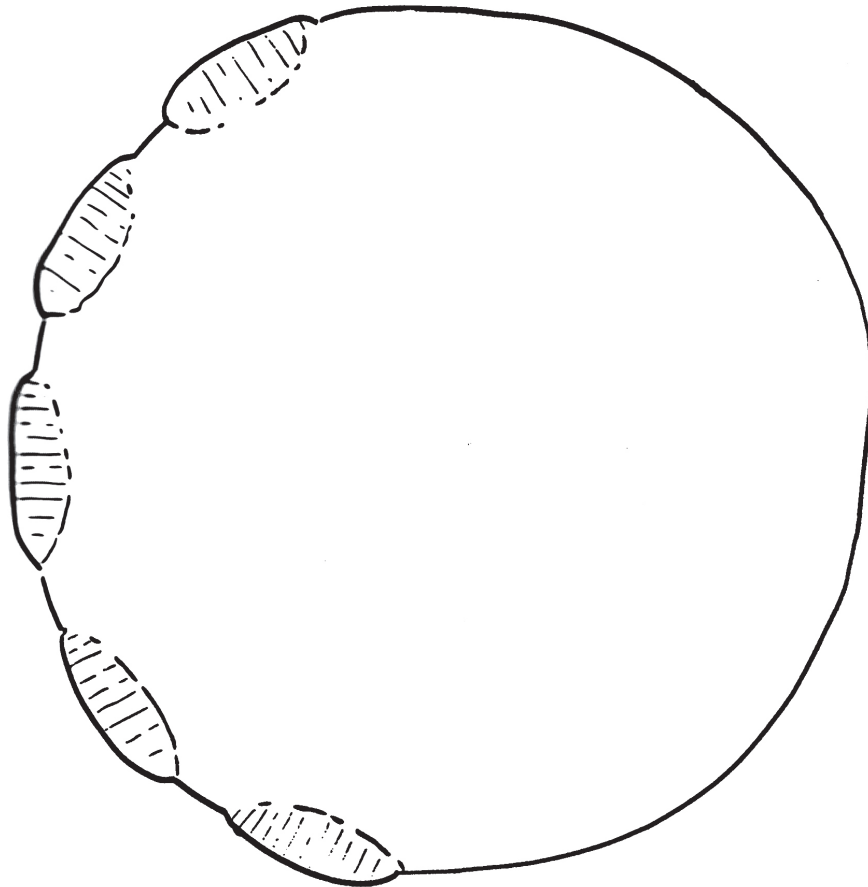
When a baby elephant is born, it's almost three feet (91 cm) tall and weighs 250 pounds (113kg)! It needs a big foot to support its body.

## WHAT YOU'LL NEED

- Ruler or measuring tape
- Piece of string
- Quarters or pennies

## WHAT TO DO

- 1 This footprint is as big as a real baby elephant's footprint.



## BABY ELEPHANT'S FOOTPRINT

**ACTIVITY CONTINUED ON NEXT PAGE (PAGE 1 OF 2)**

This activity was modified and adapted from the *Elephants and Their Young* Teacher's Guide published by LHS Great Explorations in Math and Science (GEMS).

# ELEPHANT FOOT (ACTIVITY CONTINUED)

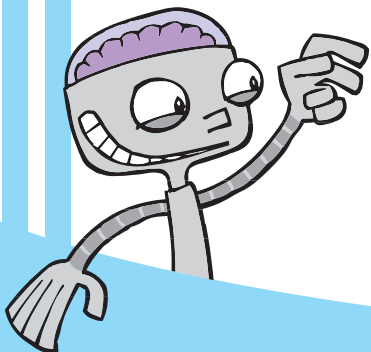
**2** How wide across do you think it is? That's your **estimate**. Use a ruler or measuring tape to measure it. How big is it really? That's your **measurement**.

**3** How long around do you think it is? Cut a piece of string to fit around the edge. Then measure the string.

	Estimate	Measurement
How wide is the footprint across (the diameter)?		
How long is the outside edge (the perimeter)?		

**4** How many quarters do you think will fit inside the elephant's footprint? How many pennies? Do you think it will take more quarters or pennies? Try it and see.

	Estimate	Measurement
How many quarters can fit in it?		
How many pennies can fit in it?		



## DID YOU KNOW?

- Elephants have five toes on each foot, just like humans.
- Adult African elephants weigh about 16,500 lbs (7,500 kg).