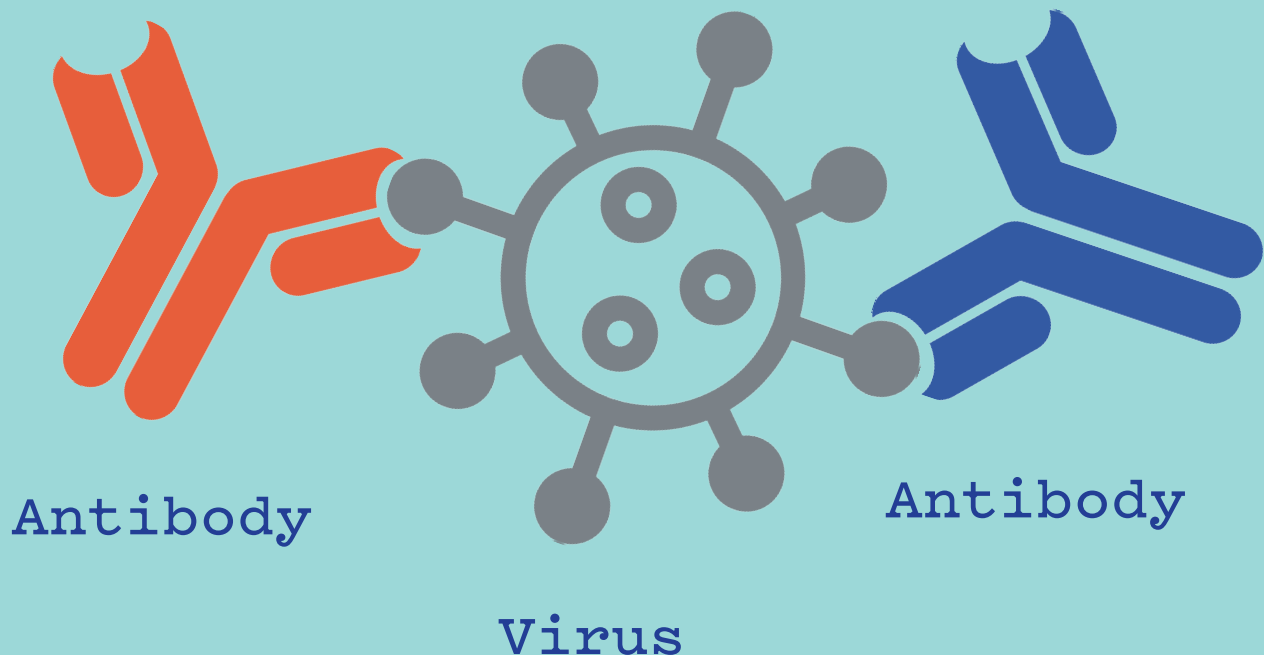


Antibody Builder



Help fight viruses by building a model antibody that matches.



Antibody Builder

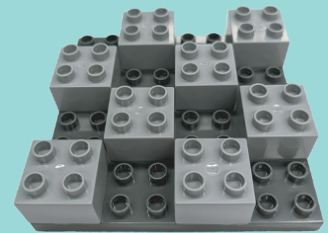


Communities
for Immunity

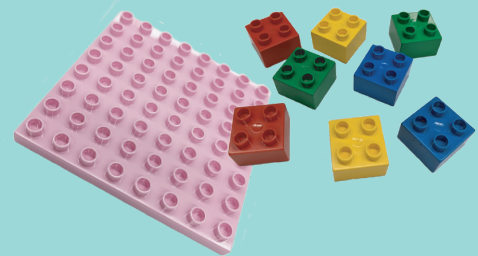
Participating Museum

Try This!

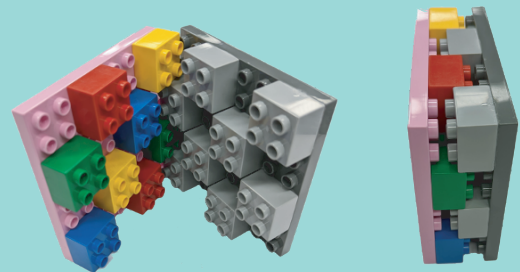
1. Choose a model virus.



2. Use antibody pieces to create a matching shape.



3. Hold the pieces together to see if they match.



¿What's
going on?

Viruses that cause diseases have different shapes on their surfaces.

Our body responds to infection by making antibodies with matching shapes that attach to and deactivate the virus.