

Flipping Through Nature:
Card Decks to Guide Outdoor Exploration

Exploring Flowers

Explore and learn about flowers through
close observation.

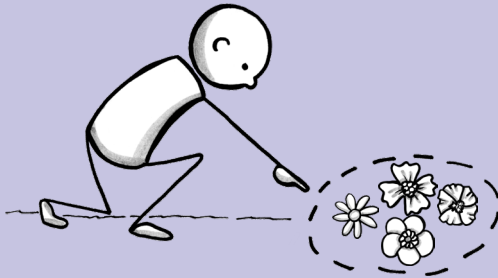
There is much
more to a flower
than a name!



1

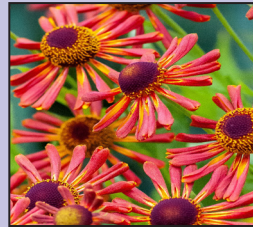
Find one or more interesting flowers to observe.

What do you notice about them?

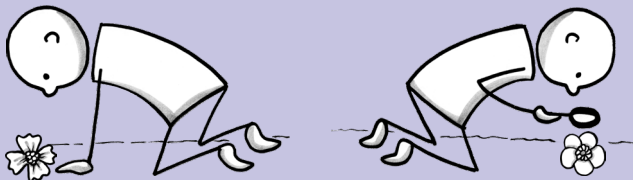


Please do not pick flowers unless you are told that it is okay.

What colors do you see on your flowers?



What different markings do you notice on your flowers?



lines



spots



other markings



What do the flower shapes remind you of?



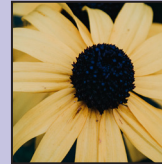
bell



rose



disc



cross



tube



another
shape



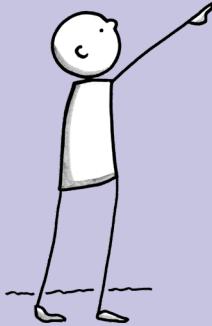
Do the flowers have a smell?



What do the smells remind you of?

What living things do you notice on flowers?

- What are they doing?
- They may be pollinators!



Pollinators eat nectar from flowers they visit.

At each flower, pollen sticks to the pollinator and then brushes off on other flowers.
(This is pollination.)



pollen



Can you find different stages of flower/fruit/seed on the same plant?



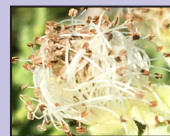
flower



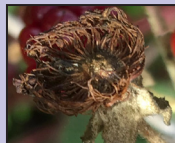
seeds/berry



faded flower



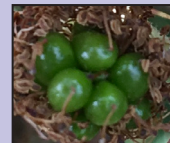
faded berry



flower bud

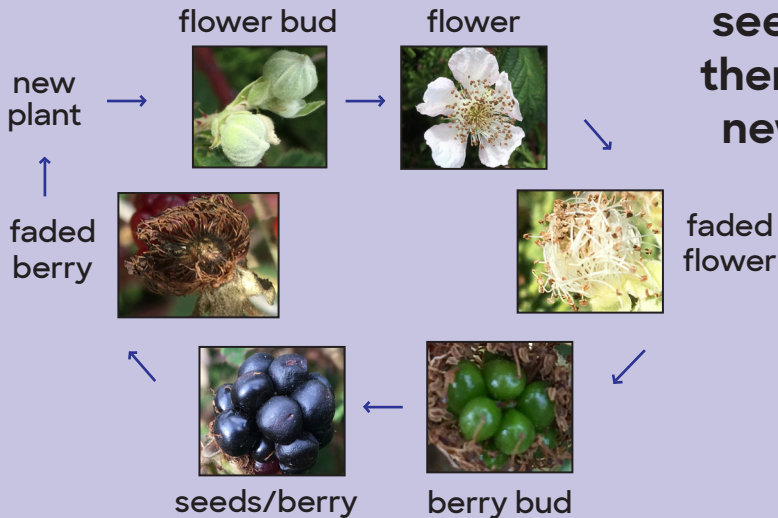


berry bud



Pollination makes a flower make fruit.

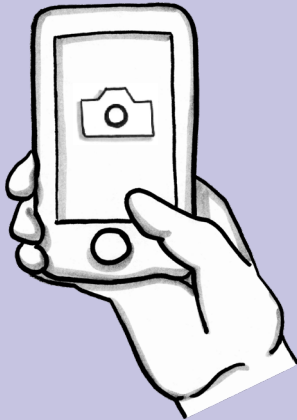
Fruits have seeds inside them to grow new plants.



Can you find different stages of flowers, buds, fruits, seeds, or berries on other plants?



Take close-up photos to notice more details.



- What do you notice?
- What do the flowers and parts of flowers remind you of?



What questions do you have about flowers?

- How could you learn more?
- Where else could you observe flowers?



What kind of flower is it?

Use an app ...



... or a field
guide ...

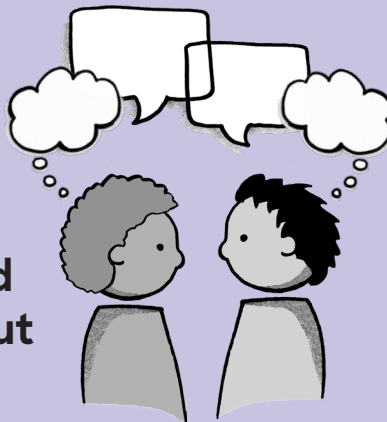
... to learn names
of flowers and
more.



Think back on your experience.

Think about or discuss:

- What did you learn about flowers?
- What did you do that helped you learn about flowers?



To see more *Flipping Through Nature: Card Decks to Guide Outdoor Exploration* activities, visit lwrnce.org/center-for-environmental-learning. There you will also find guides for using the *Flipping Through Nature* card decks, photo acknowledgments, and more information.



Funding for *Flipping Through Nature: Card Decks to Guide Outdoor Exploration* has been generously provided by Woka Foundation.

© 2024 The Regents of the University of California. The Center for Environmental Learning at UC Berkeley's Lawrence Hall of Science. *Flipping Through Nature: Card Decks to Guide Outdoor Exploration*.

