

Flipping Through Nature:  
Card Decks to Guide Outdoor Exploration

# Exploring Lichen

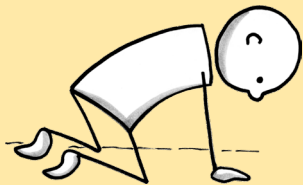
Observe these strange and  
beautiful living things.



*Lichen rhymes with hikin'!*



# Look at lichen up close. So cool!



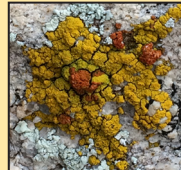
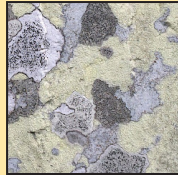
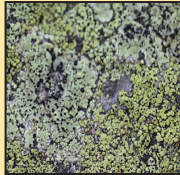
Use a magnifier if  
you have one.

What do you notice?

Explore respectfully.

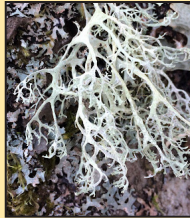


# How many different colors of lichen can you find?



# How many different shapes of lichen can you find?

What do they remind you of?



# Can you find 3 different kinds of lichen?



**Crusty:** flat edges, scab-like, stuck to rock or wood, like paint.



**Shrubby:** beard-like, often hangs down like a small bush.



**Leafy:** lettuce-like, often attached to wood/rock in one spot.



**Looking at lichen up close  
is kind of like snorkeling  
in a coral reef!**



# What surfaces can you find lichen growing on?

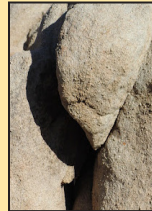
dead wood?



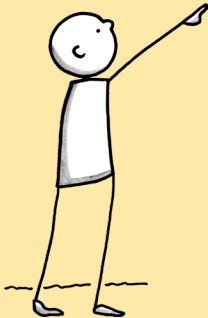
living trees?



rocks?



others?



Why might lichen grow in some places and not in others?





# Lichen is made of two living things: fungus and algae.

fungus  
(shape)



+

algae  
(makes food)



=

lichen



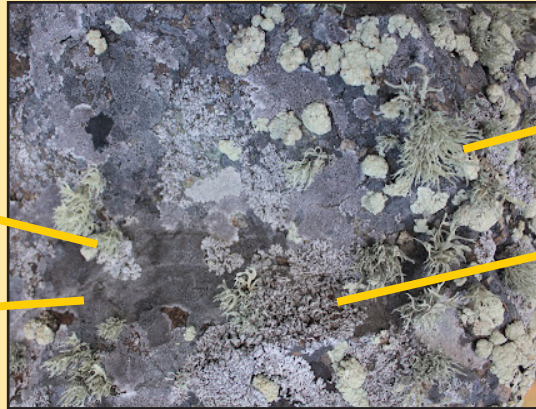
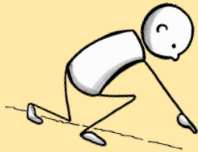


# Freddi fungus and Andi Algae took a “lichen” to each other.



They are in a relationship that helps both.

# Can you find lichen growing on other kinds of lichen?



leafy

crusty

shrubby

leafy

How might this be helpful to them?



# This is moss.

Mosses are plants. Lichens are not plants.



Can you notice any differences between moss and lichen?

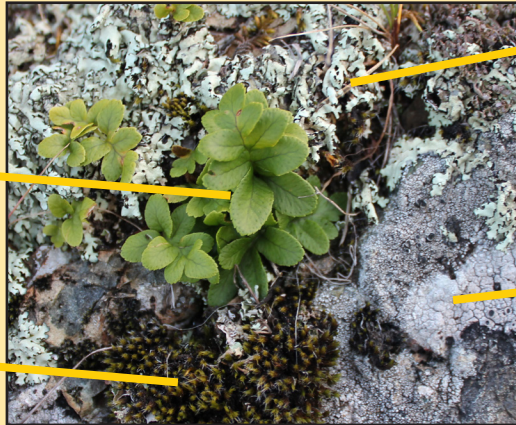


# Can you find mosses or other plants growing on lichen?



plant

moss



lichen

lichen

# Does lichen harm living trees?

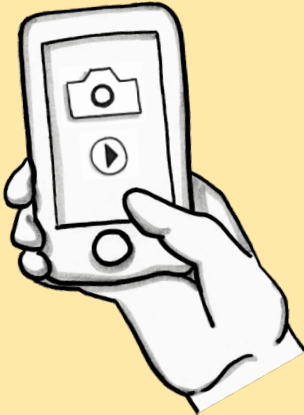


**No. Lichen grows on dead branches, but it does NOT harm them.**

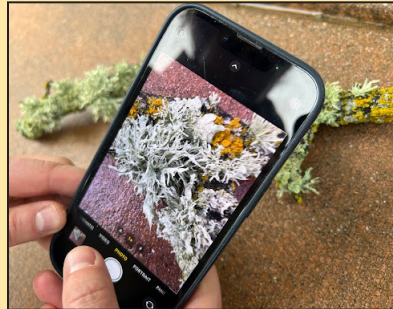
**Why might dead wood be easier for lichen to grow on than living wood?**



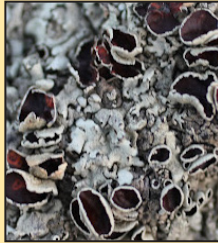
# Take a photo or video of cool lichen.



What can you see very close up?



# What do you wonder about lichen?



- Can you answer questions through observing, reading, or looking them up?
- Where else could you find and observe lichen?





# Think back on your experience.



Think about or discuss:

- What did you learn about lichen?
- What did you do that helped you learn about lichen?



To see more *Flipping Through Nature: Card Decks to Guide Outdoor Exploration* activities, visit [lwrnce.org/center-for-environmental-learning](http://lwrnce.org/center-for-environmental-learning). There you will also find guides for using the *Flipping Through Nature* card decks, photo acknowledgments, and more information.



Funding for *Flipping Through Nature: Card Decks to Guide Outdoor Exploration* has been generously provided by Woka Foundation.

