



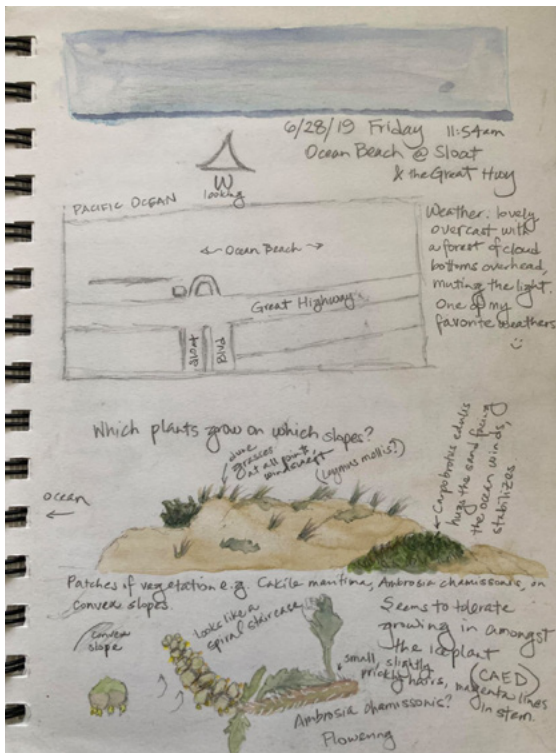
Ruth Heindel



"The drawing helped me focus my observations, while the writing allowed me to express questions that would be difficult to convey with drawings alone. The questions I included on this sketch became the foundation for my dissertation. Some of the questions are ones I'm still thinking about and would like to continue working on."

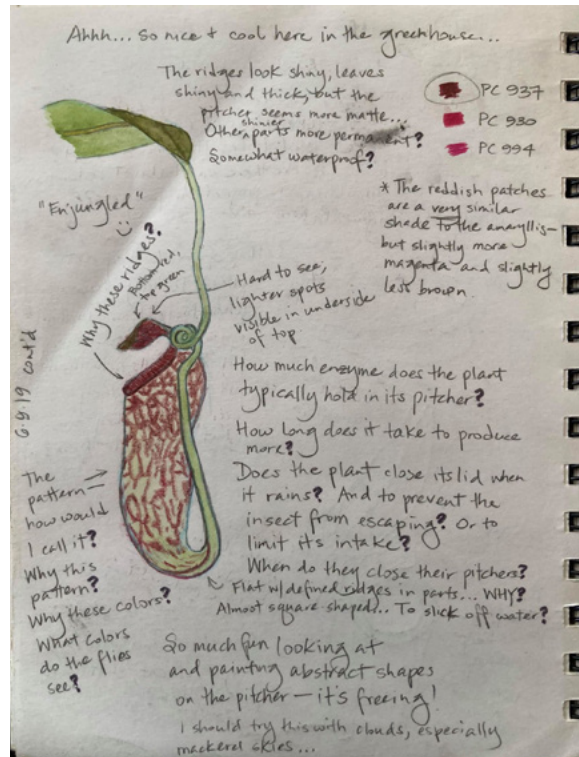
Field Journaling Handout—Model Field Journal Pages

(c) Ruth Heindel



Field Journaling Handout—Model Field Journal Pages

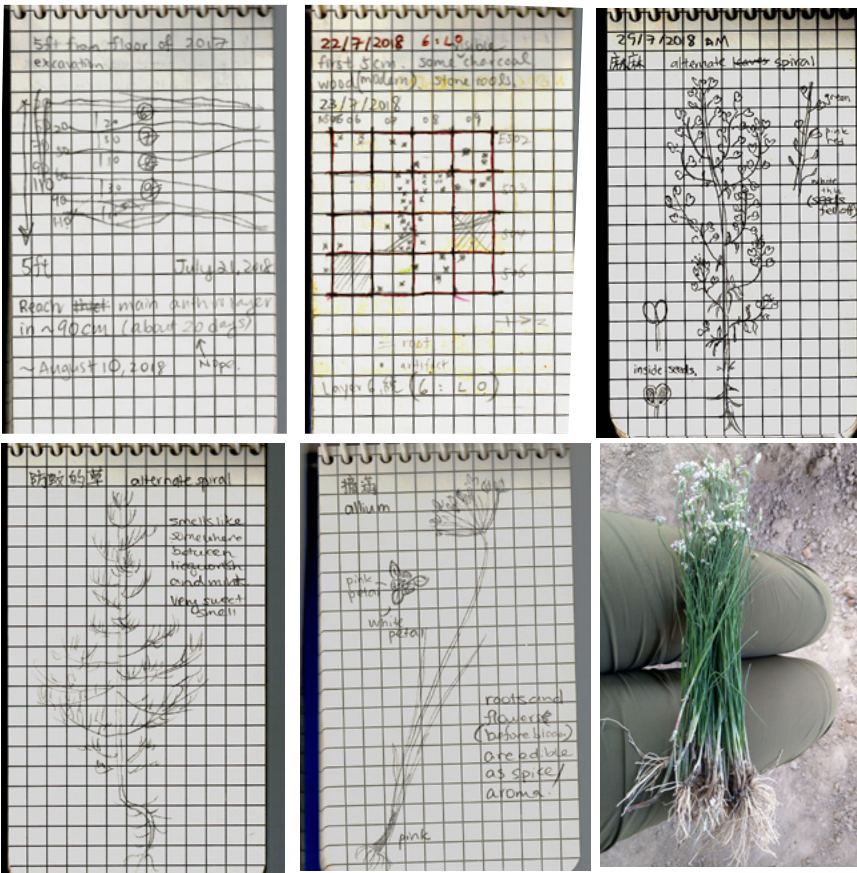
(c) Yvea Moore



Yvea Moore







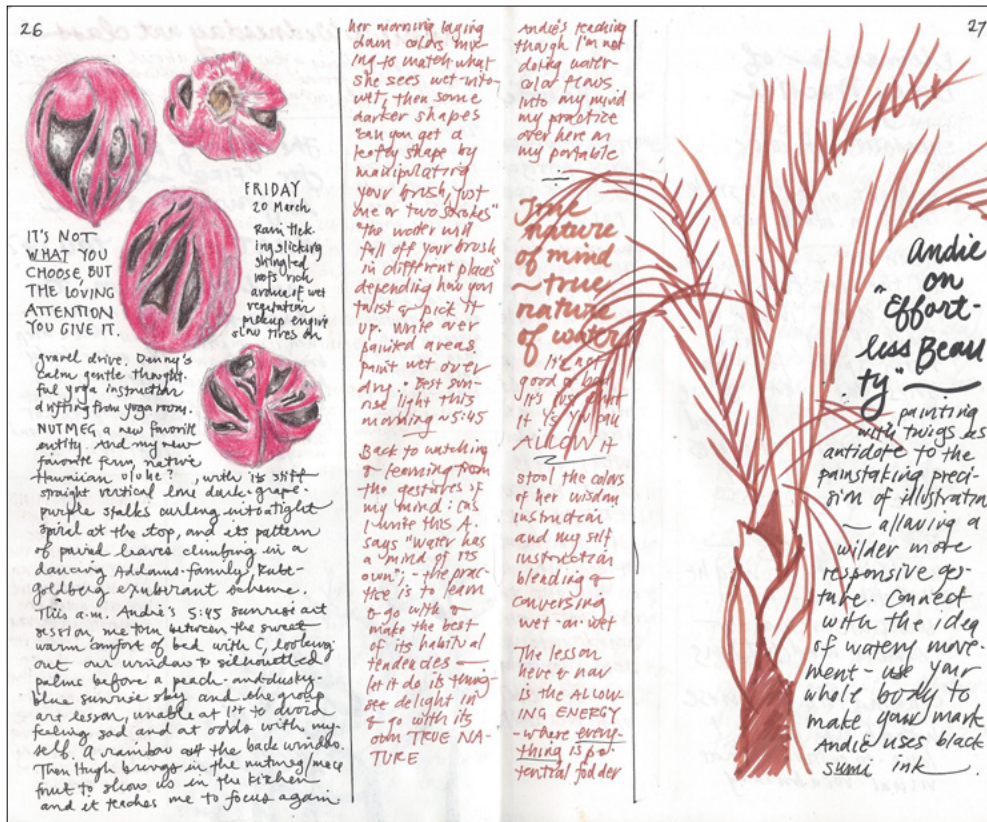
These are field notes for my research project on Late Pleistocene plant foods in Hebei, northern China. My goals were to look for carbonized evidence of food refuses left behind by ancient people at an archaeological site and learn about the wild plants, which are useful to people who are currently living near the site. Entry 1 was notes on the excavation profile/stratigraphy in which I analyzed the relative order of sediment layers containing artifacts (objects related with human activity) at the site. Entry 2 recorded where artifacts and carbonized plant remains were surfacing during the archaeological excavation, which helped me decide where in the site to focus my sample collection. Entries 3 and 4 are two examples of some exploratory notes that I had taken while interviewing local farmers on the plant foods that they eat and collect from the wild. Entry 3 is a type of spice, while entry 4 repels insects when dried and burnt to create smoke. I was especially excited to take notes on entry 5. I had been looking for ethnographic evidence of edible roots and tubers in the region for about a month when one of the farmers showed me how to eat the flowers and roots of zhai man (wild onions), which they use as a garnish in pork dishes.

Mana Hayashi Tang



Field Journaling Handout—Model Field Journal Pages

(c) Mana Hayashi Tang



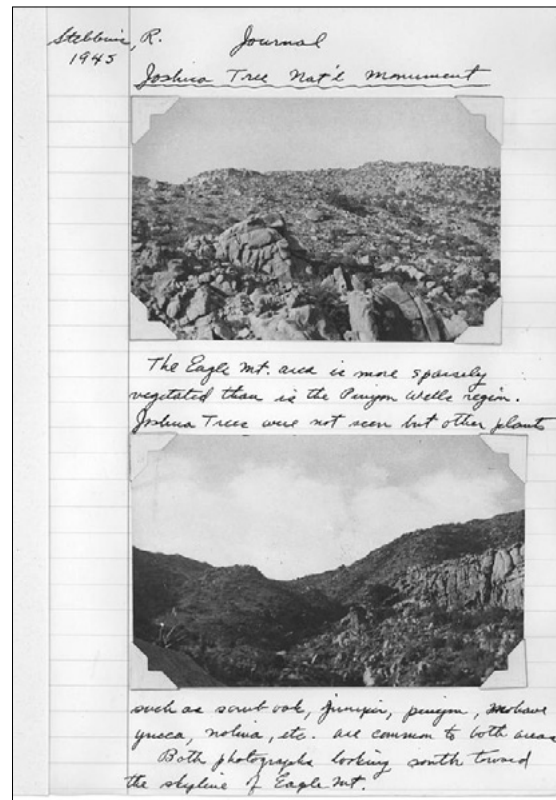
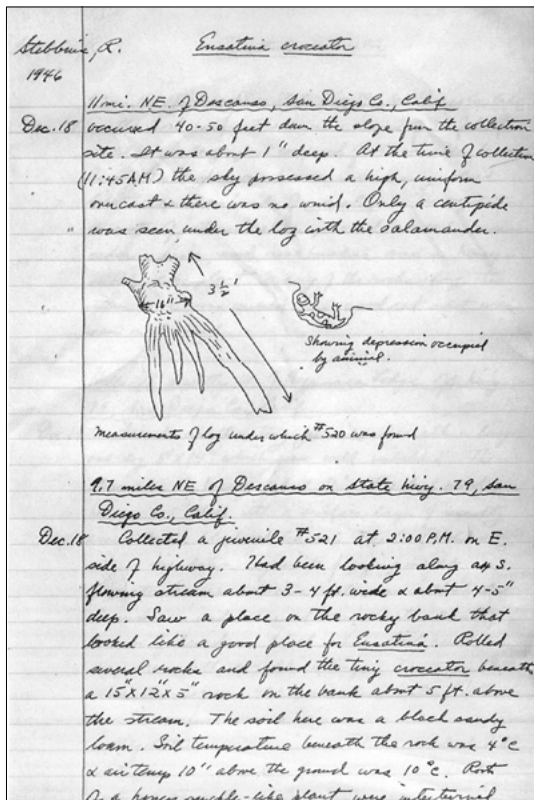
Sarah Rabkin



Field Journaling Handout—Model Field Journal Pages

(c) Sarah Rabkin





Robert Stebbins



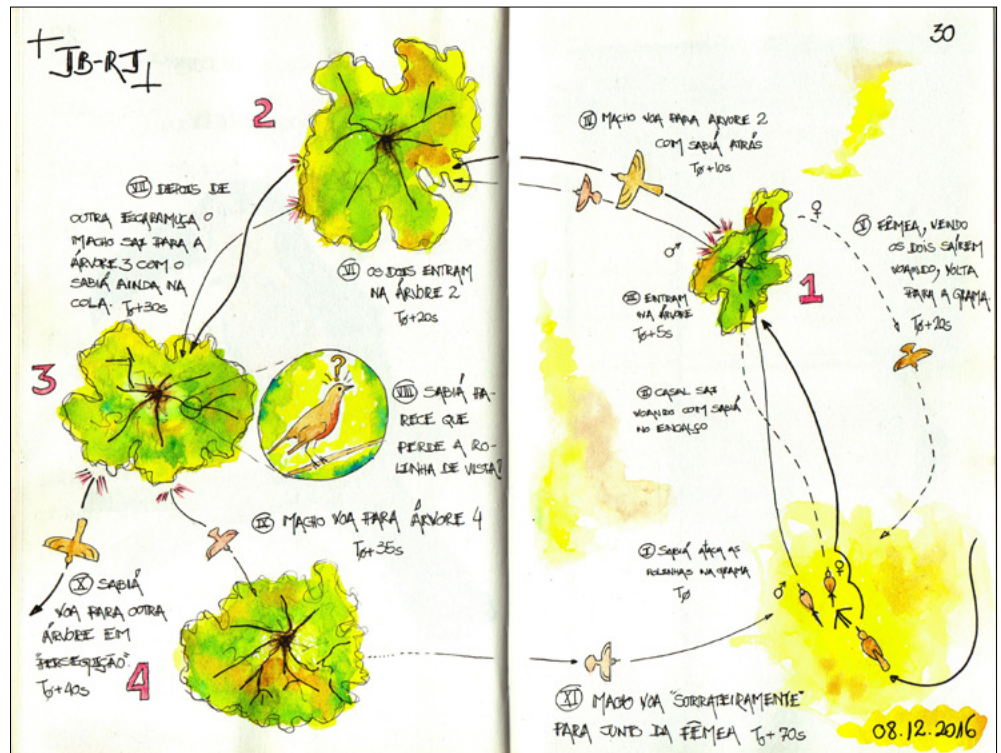
Field Journaling Handout—Model Field Journal Pages

(c) Robert Stebbins

#### Translation:

- T=0, Sabiá attacks the doves at the grass.
  - II, Couple flew away with Sabiá on the chase.
  - III, Tree 1, T=5s, Everyone enter tree.
  - IV, T=10s, Male fled to Tree 2 chased by the Sabiá.
  - V, T=20s, Female, seeing the two flying away, goes back to the grass.
  - VI, T=20s, Both enter Tree 2.
  - VII, T=30s, After some more skirmish, the male fled to Tree 3 still with the Sabiá at his tail.
  - VIII, Sabiá apparently loses track of the dove!
  - IX, T=35s, Male flew to Tree 4.
  - X, T=40s, Sabiá flies to another tree, still 'chasing.'
  - XI, t=70s, Male stealthily flies to meet the female.
- This took around one and a half minutes to complete, with the Sabiá losing track and the doves coming to resume eating at the same spot they were in the beginning.

Marcelo Jost

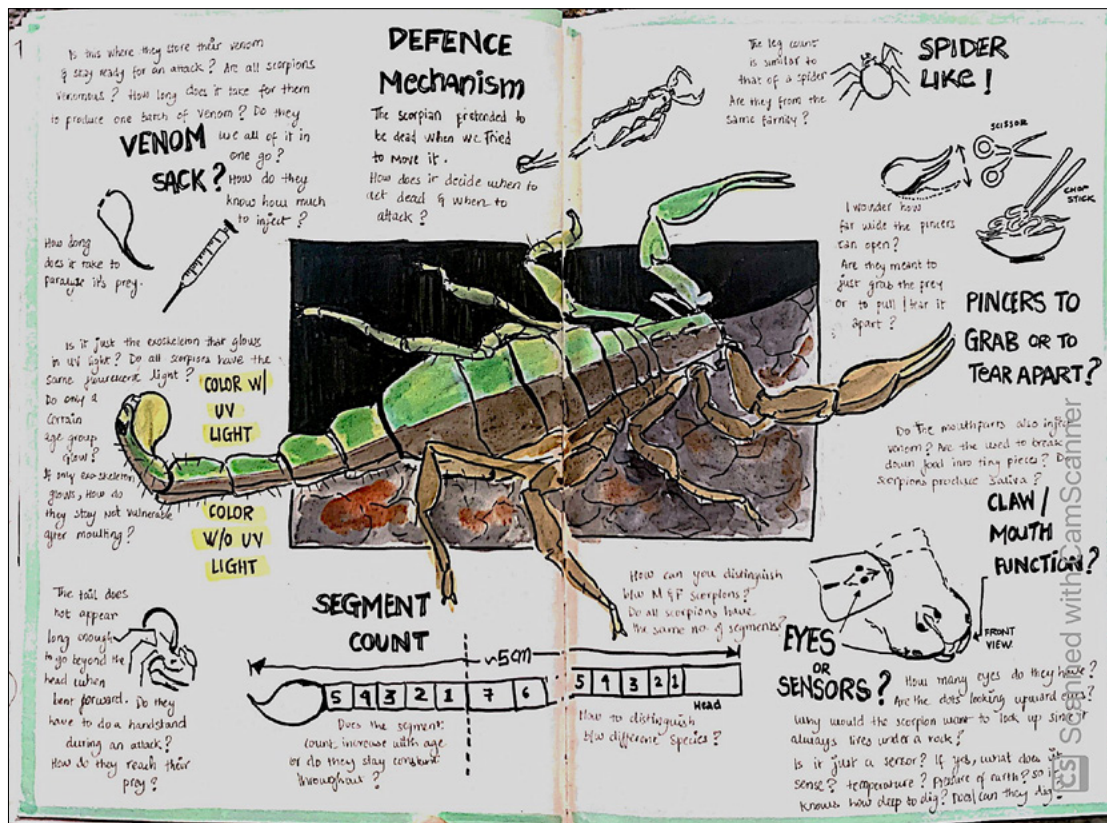


Field Journaling Handout—Model Field Journal Pages

(c) Marcelo Jost





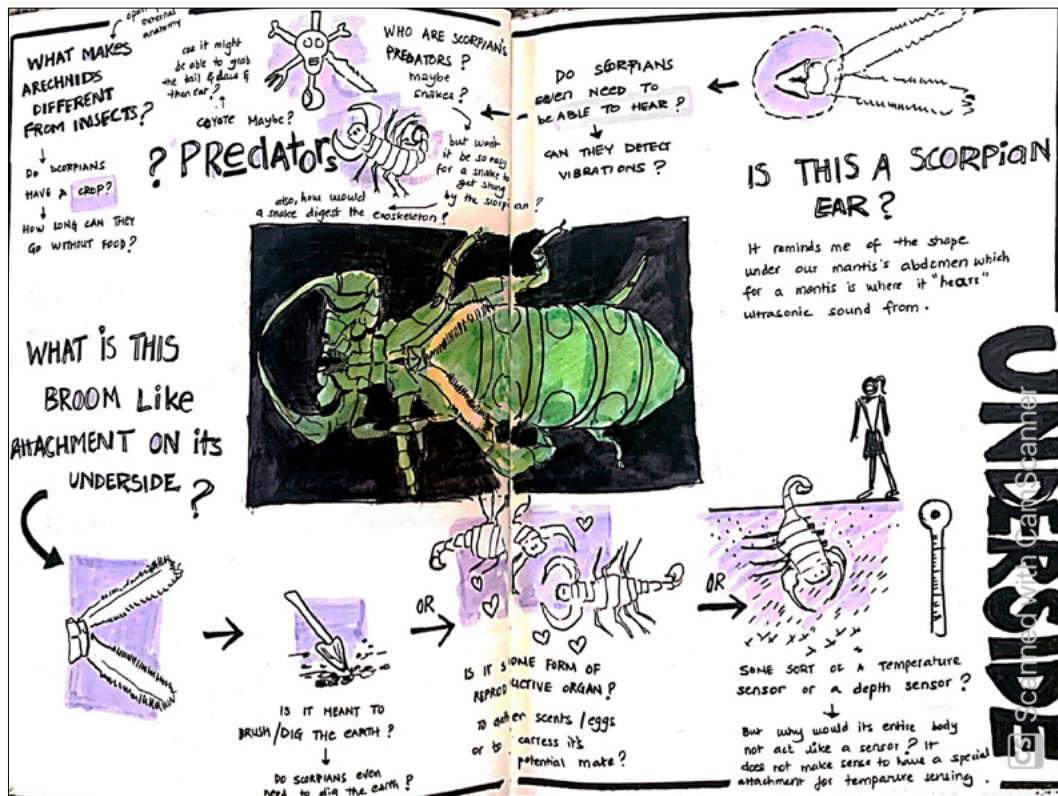


Gargi Chugh



Field Journaling Handout—Model Field Journal Pages

(c) Gargi Chugh



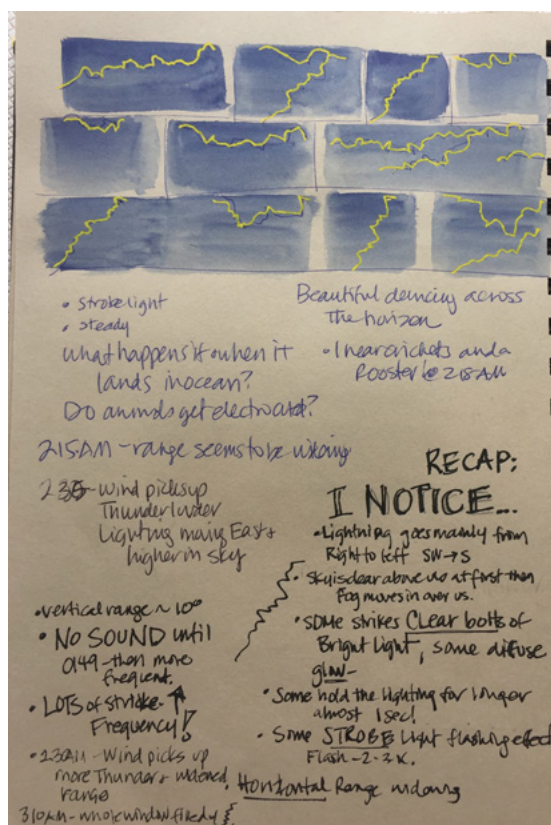
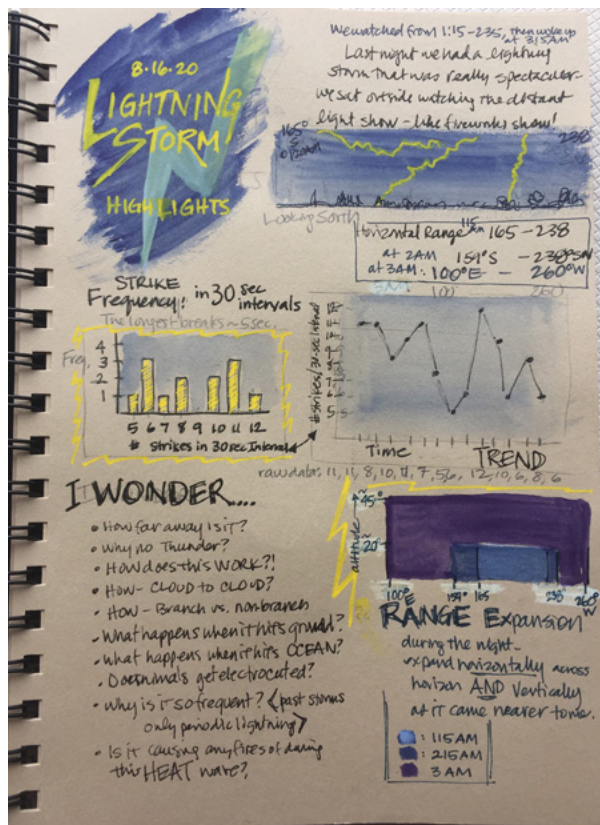
Gargi Chugh



Field Journaling Handout—Model Field Journal Pages

(c) Gargi Chugh



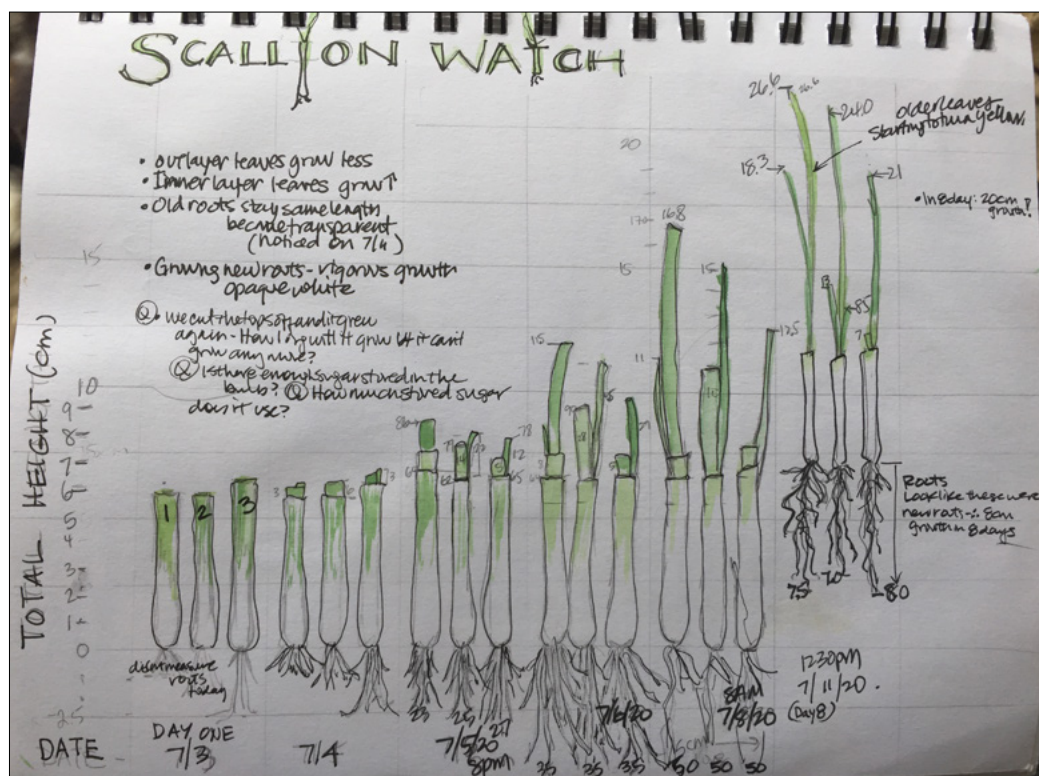


Melinda Nakagawa



Field Journaling Handout—Model Field Journal Pages

(c) Melinda Nakagawa



Melinda Nakagawa



Field Journaling Handout—Model Field Journal Pages

(c) Melinda Nakagawa



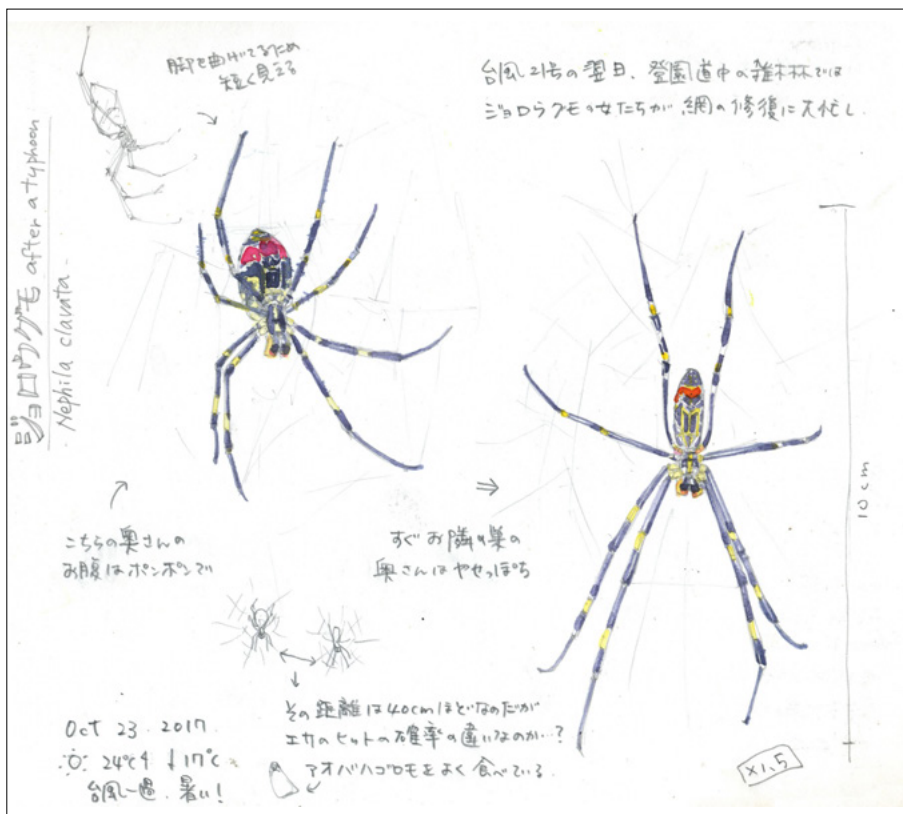












Translation:

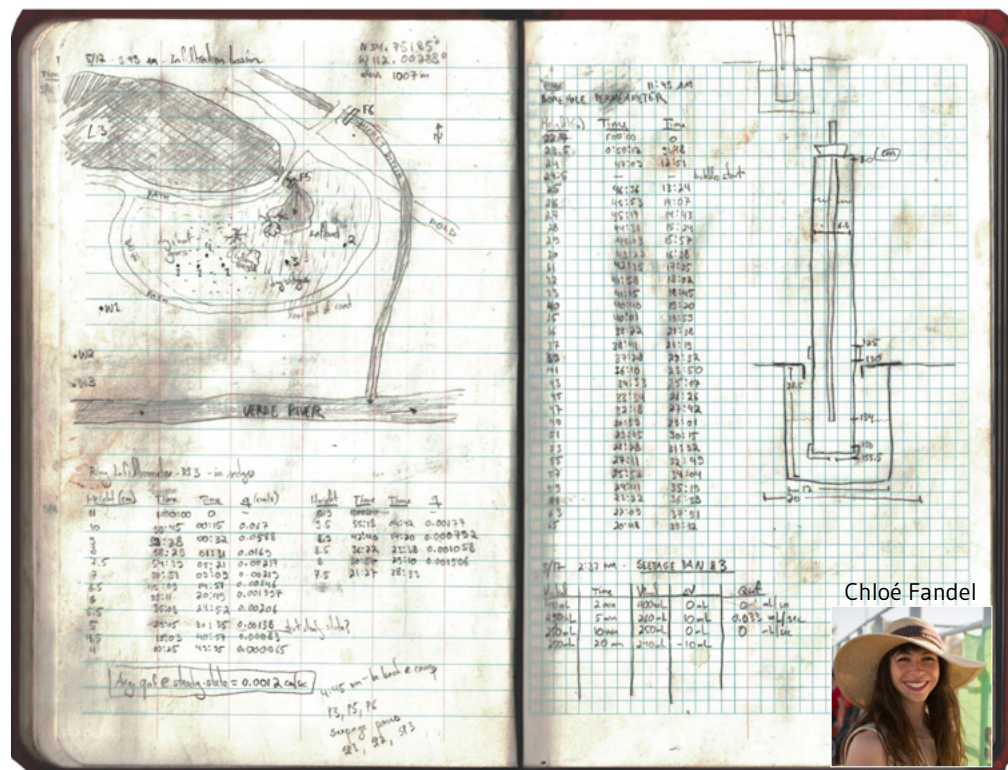
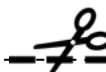
1. In the morning, we found lady spiders busily working to fix up their webs, which were broken by the powerful typhoon No. 21.
2. Legs look shorter here because it bends them.
3. I realized one of the lady spiders was plump.
4. But the one right next to her was skinny.
5. Only 40 cm difference between each of their webs. Does the quantity of food make the difference?
6. they often eat Aobahagoromo—Geisha ditinctissima. (Arrow points to the small diagram of an insect remnant.)

Eriko Kobayashi



Field Journaling Handout—Model Field Journal Pages

(c) Eriko Kobayashi



“These two pages record a variety of field measurements, all referenced to the map on the upper left. There are several other pages with columns of data for the other locations on the map. The map is extremely important, because it shows where each data column comes from, and which bodies of water are connected to each other. For the measurements on the right-hand page, instead of writing down “length of tube 134 cm, depth of hole 38.5 cm,” etc., I drew a diagram [of the instrument], because it’s more specific and less likely to cause confusion later. I also calculated some results quickly in the field, which we checked later using Excel. These [field calculations] are to see if the results are reasonable. Sometimes they are not, and then I know that I made a mistake and need to retake measurements while I am still in the field.”

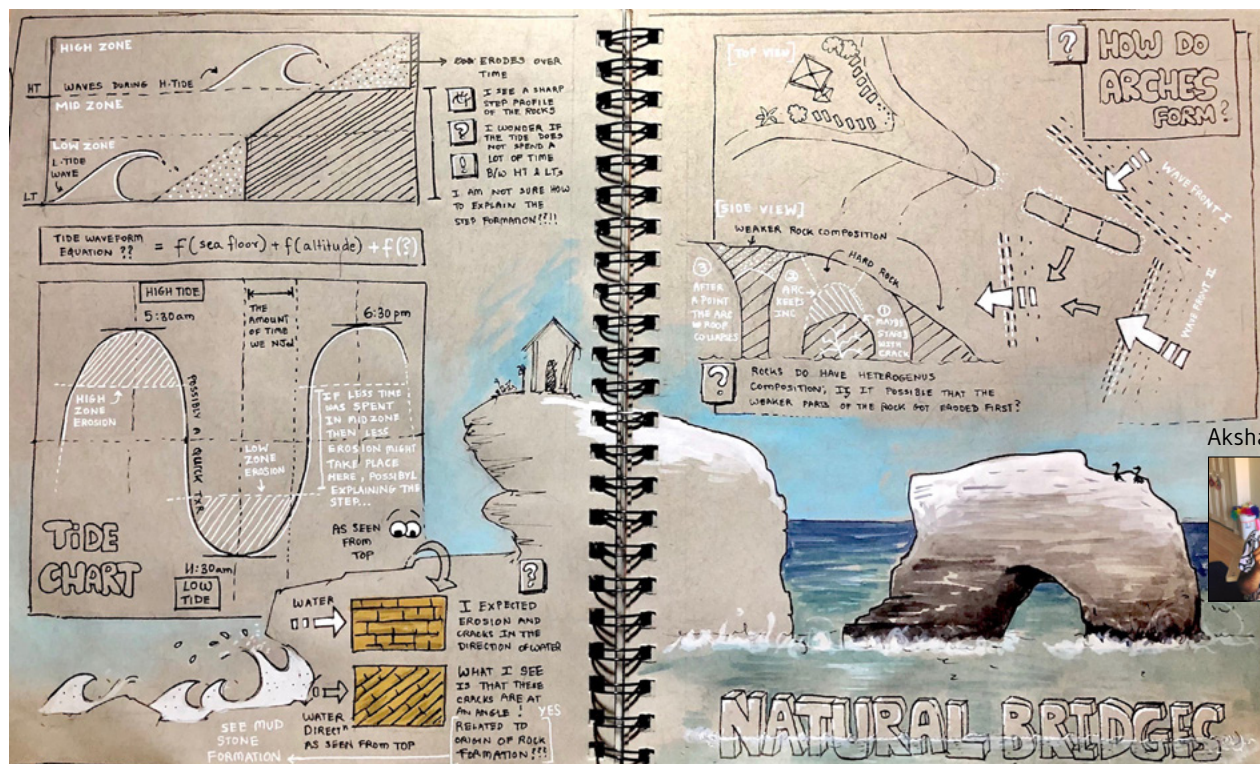
Chloé Fandel



Field Journaling Handout—Model Field Journal Pages

(c) Chloé Fandel



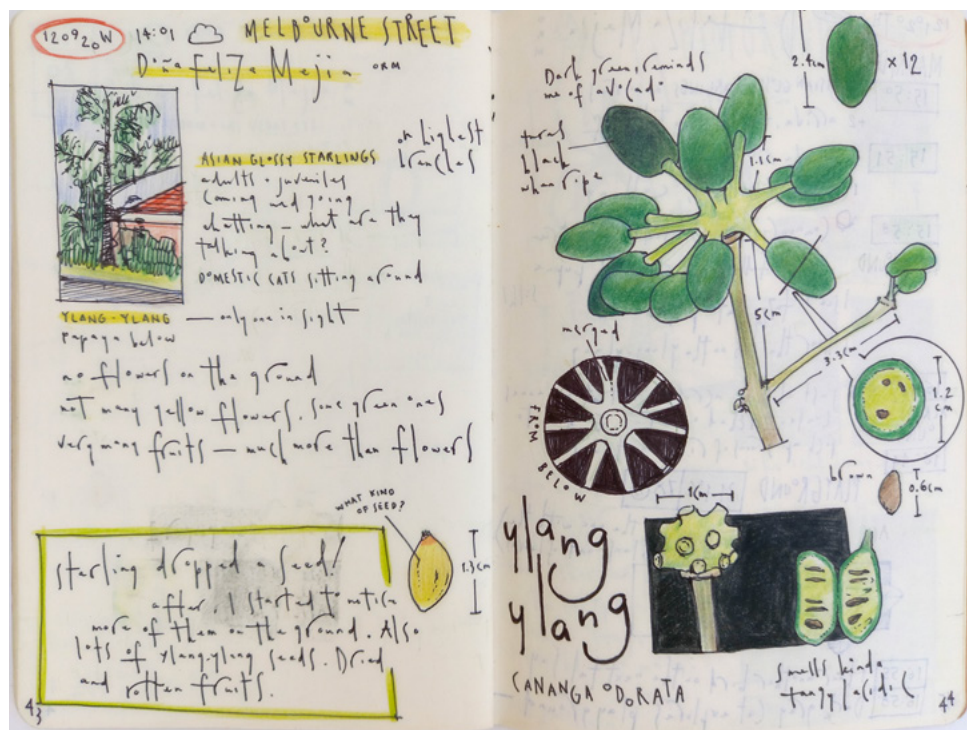


Akshay Mahajan

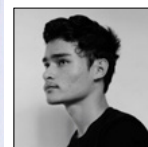


Field Journaling Handout—Model Field Journal Pages

(c) Akshay Mahajan



Subhelic



Field Journaling Handout—Model Field Journal Pages

(c) Subhelic

